



**Weekly Funding Opportunity Announcements**  
**Monday, June 10, 2013**

Reminder: ORSD coordinates and pays for external reviews and editorial services for HSPH Assistant and Associate Professors preparing NIH grant proposals.

For more information please contact Amanda Spickard at [orsd@hsph.harvard.edu](mailto:orsd@hsph.harvard.edu) or ext. 2-1711.

**NIH Funding Announcements – New This Week**

**New RFAs for week ending June 7, 2013:**

<a href="#">Announcement Number</a>	<a href="#">Issuing Organization</a>	<a href="#">Release Date</a>	<a href="#">Opening Date (SF424 Only)</a>	<a href="#">Expiration Date</a>	<a href="#">Activity Code(s)</a>	<a href="#">Title</a>
<a href="#">RFA-DA-14-009</a>	NIDA	06/10/2013	10/15/2013	11/16/2013	R01	HIV/AIDS and Substance Use Among the Homeless and Unstably Housed (R01)
<a href="#">RFA-DA-14-010</a>	NIDA	06/10/2013	10/15/2013	11/16/2013	R01	HIV/AIDS and Substance Use among Black/African American Women and Young MSM (R01)
<a href="#">RFA-DA-14-011</a>	NIDA	06/10/2013	10/15/2013	11/16/2013	R01	Integrating Substance Abuse Prevention and Treatment within HIV/AIDS Service Delivery Settings (R01)
<a href="#">RFA-DA-14-012</a>	NIDA	06/10/2013	10/15/2013	11/16/2013	R21	Comorbid HIV, Chronic Pain, and Substance Use among Older Adults (R21)

**New PARs:**

<a href="#">Announcement Number</a>	<a href="#">Issuing Organization</a>	<a href="#">Release Date</a>	<a href="#">Opening Date (SF424 Only)</a>	<a href="#">Expiration Date</a>	<a href="#">Activity Code(s)</a>	<a href="#">Title</a>
<a href="#">PAR-13-240</a>	NINDS	06/07/2013	08/25/2013	09/08/2016	R25	NINDS Research Education Opportunities (R25)
<a href="#">PAR-13-241</a>	NIMH	06/07/2013	01/13/2014	10/16/2015	U01	Unveiling the Genome: Genetic Architecture of Severe Mental Disorders Revealed (Collaborative U01)
<a href="#">PAR-13-242</a>	NIAID	06/07/2013	08/25/2013	09/08/2016	R24	NIAID Resource-Related Research Projects (R24)
<a href="#">PAR-13-243</a>	NIGMS	06/07/2013	08/25/2013	09/26/2015	P20	Renewal of Centers of Biomedical Research Excellence [COBRE](P20)

**Other Federal Funding Announcements****Department of Defense**

FY13 DOD CDMRP Program Pre-Announcements

The Fiscal Year 2013 (FY13) Defense Appropriations Act provides research funding for the peer reviewed programs managed by the Department of Defense (DOD) office of Congressionally Directed Medical Research Programs (CDMRP).

This is to notify the research community of the recently released pre-announcements from the following programs:

*Autism Research Program (ARP)*  
*Bone Marrow Failure Research Program (BMFRP)*  
*Duchenne Muscular Dystrophy Research Program (DMDRP)*  
*Lung Cancer Research Program (OCRP)*  
*Multiple Sclerosis Research Program (MSRP)*  
*Ovarian Cancer Research Program (OCRP)*  
*Peer Reviewed Medical Research Program (PRMRP)*

Descriptions of each of the funding opportunities, eligibility, key mechanism elements, and funding can be found in the respective Program pre-announcement. FY13 pre-announcements can be found in the CDMRP home page features at <http://cdmrp.army.mil>.

Funding Opportunities now available:

- [Amyotrophic Lateral Sclerosis](#)
- [Autism](#)
- [Bone Marrow Failure](#)
- [Breast Cancer](#)
- [Defense Medical Research and Development Program](#)
- [Gulf War Illness](#)
- [Lung Cancer](#)
- [Multiple Sclerosis](#)
- [Neurofibromatosis](#)
- [Ovarian Cancer](#)
- [Peer Reviewed Cancer](#)
- [Peer Reviewed Medical](#)
- [Peer Reviewed Orthopaedic](#)
- [Prostate Cancer](#)
- [Psychological Health/Traumatic Brain Injury](#)
- [Spinal Cord Injury](#)
- [Tuberous Sclerosis Complex](#)

**\*New** - [CDC: Consortium of National Networks to Impact Tobacco-Related and Cancer Health Disparities](#)

Closing Date: July 18, 2013

**\*New** - [NIH: Services Research for Autism Spectrum Disorder across the Lifespan \(ServASD\): Pilot Research on Services for Transition-Age Youth](#)

Closing Date: October 22, 2013

**\*New** - [NIH: FY14 NIDA Avant-Garde Award Program for HIV/AIDS Research \(DP1\)](#)

Closing Date: November 6, 2013

**\*New** - [NIH: Chronic Inflammation and Age-related Disease \(R01\) Grant](#)

Closing Date: September 7, 2014

[CDC: National Support to Enhance Implementation of Comprehensive Cancer Control Activities](#)

Closing Date: July 18, 2013

[FDA: Advancing Medical Device Postmarket Surveillance Infrastructure and Epidemiologic Methodologies through Multi-stakeholder Partnership](#)

Closing Date: April 30, 2017

[CDC: NIOSH Cooperative Agreement Research to Aid Recovery from Hurricane Sandy](#)

Closing Dates: June 18, 2013

[CDC: Building and Supporting Core Public Health Capacities Related to Violence and Injury Prevention](#)

Closing Date: June 25, 2013

[NIH: Evidence-based Demonstration Projects in Immunization \(Admin Supp\)](#)

Closing Date: July 10, 2013

[CDC: Making Disasters Less Disastrous: Public Health, Healthcare Executives, and Emergency Management Working Together](#)

Closing Date: June 18, 2013

[CDC: Tribal Public Health Capacity Building and Quality Improvement](#)

Closing Date: July 15, 2013

[NIH: National Cooperative Reprogrammed Cell Research Groups \(NCRCRG\) to Study Mental Illness \(U19\)](#)

Closing Date: January 7, 2016

[CDC: National Organizations Support for State Oral Health Programs](#)

Closing Date: June 17, 2013

[NIH: Integration and Analysis of Diverse HIV-Associated Data \(R03\)](#)

Closing Date: August 19, 2013

[NIH: Methodologies and Formative Work for Combination HIV Prevention Approaches \(R01\)](#)

Closing Date: September 3, 2013

[CDC: Youth Violence Training and Technical Assistance](#)

Closing Date: June 24, 2013

[NIH: Countermeasures Against Chemical Threats \(CounterACT\) Cooperative Research Projects \(U01\)](#)

Closing Date: September 16, 2015

[NIH: Innovative Measurement Tools for Community Engaged Research Efforts \(R01\)](#)

Closing Date: September 7, 2016

[NIH: Symptom Management in HIV-Infected Individuals with Comorbid Conditions \(R01\)](#)

Closing Date: September 7, 2016

[ASTMH: \\$25,000 Centennial Travel Award in Basic Science Tropical Disease Research](#)

Closing Date: June 26, 2013

[NIH: Tobacco Control Regulatory Research - R21 Modification 3](#)

Closing Date: June, 18 2013

[NIH: National Cancer Institute \(NCI\) Cancer Education and Career Development Program \(R25\)](#)

Closing Date: September 7, 2013

[NIH: MARC Undergraduate Student Training in Academic Research \(U-STAR\) National Research Service Award \(NRSA\) Institutional Research](#)

Closing Date: June, 24 2015

[CDC: National Network to Enhance Capacity of State and Local Sexually Transmitted Disease Prevention Programs \(NNECS\)](#)

Closing Date: June 16, 2013

[NIH: Male Contraceptive Development Program \(U01\)](#)

Closing Date: August 27, 2013

[Pfizer: Smoking Cessation Leadership Center at UCSF and Pfizer Independent Grants for Learning & Change](#)

Closing Date: June 11, 2013

[NIH: Advancing Eating Disorders Research through Dimensional Studies of Biology and Behavior](#)

Closing Date: June 11, 2013

[NIH: Alzheimer's Disease Research Centers](#)

Closing Date: June 11, 2013

[NIH: Dissemination and Implementation Research in Health](#)

Closing Date: January 7, 2016

[NIH: Understanding and Promoting Health Literacy](#)

Closing Date: May 7, 2016

[NIH: Specialized Cooperative Centers Program in Reproduction and Infertility Research \(U54\)](#)

Closing Date: July 25, 2013

[NIH: Research on Alcohol and HIV/AIDS \(R03\)](#)

Closing Date: May 7, 2016

[NIH: Regional and International Differences in Health and Longevity at Older Ages \(R03\)](#)

Closing Date: September 7, 2016

[NIH: Obesity Policy Evaluation Research \(R01\)](#)

Closing Date: May 7, 2016

[AHRQ: Grants for Health Services Research Dissertation Program \(R36\)](#)

Closing Dates: May 1, August 1, and November 1, 2013

[NIH: School Nutrition and Physical Activity Policies, Obesogenic Behaviors, and Weight Outcomes](#)

Closing Date: May 7, 2016

[CDC: NIOSH Exploratory/Developmental Grant Program](#)

Closing Date: September 8, 2015

[CDC: NIOSH Small Research Program](#)

Closing Date: September 8, 2015

## Other Funding Opportunities

### **New\*\*Limited Submission - The Kinship Foundation – 2014 Searle Scholars Program**

Below, please find details of a limited submission opportunity from the Kinship Foundation: The 2014 Searle Scholars Program. This announcement applies to eligible applicants from the Harvard School of Public Health and the Cambridge Campus Area.

If you are affiliated with Harvard Medical School please follow up with Betty Carburnari ([Betty\\_Carburnari@hms.harvard.edu](mailto:Betty_Carburnari@hms.harvard.edu)) in regards to the 2014 Searle Scholars opportunity.

Sponsor: The Kinship Foundation

Program: 2014 Searle Scholars Program

Internal Due Date: July 8, 2013

**Internal Competition Instructions: Eligible applicants should submit the following in one PDF to Autumn Bennett ([autumn\\_bennett@harvard.edu](mailto:autumn_bennett@harvard.edu)) no later than 5 p.m.; Monday, July 8, 2013. A proposal of not more than two (2) pages (graphics may go on a separate page), a current CV (no preferred format) and a letter of recommendation from a department chair.**

**Sponsor Due Date: Friday, September 27, 2013**

Overview of Opportunity: The Searle Scholars program looks to fund recently appointed (on or after July 1, 2012) assistant professors whose research falls into one of the following areas: biochemistry, cell biology, genetics, immunology, neuroscience, pharmacology, and related areas in chemistry, medicine, and the biological sciences. The Searle Scholars Program does not ordinarily support purely clinical research but has supported research programs that include both clinical and basic components. Potential applicants who are unsure if their research is appropriate are encouraged to examine the research interests of present and former Searle Scholars <http://www.searlescholars.net/go.php?id=6>

Key Features of the FOA:

- 15 new awards anticipated
- Areas of interest include biochemistry, cell biology, genetics, immunology, neuroscience, pharmacology and related areas in chemistry, medicine and the biological sciences
- Eligible applicants must be at the level of assistant professor and have received this appointment on or after July 1, 2012
- \$300,000 over a three year period
- No citizenship restrictions
- Other sources of funding acceptable

### **The Smith Family Foundation New Investigator Award – Limited Submission**

**The Smith Family Foundation has opened its call for New Investigator Award applications.** The program provides support (\$300K for 3 years) for promising junior faculty who are beginning to establish their own independent laboratories and research programs.

\*The foundation will only allow applicant institutions to nominate one nominee for the award.

**If you are interested in applying, please submit a brief notice of intent/interest to the HSPH Office of Research Strategy and Development ([orsd@hsph.harvard.edu](mailto:orsd@hsph.harvard.edu)) as soon as possible but no later than June 17, 2013.**

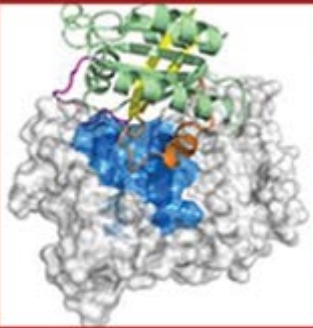
Interested applicants must submit the following application materials to ORSD by July 8, 2013:

- Completed HSPH Application Cover Sheet (attached)

- Nominating letter addressed to the Associate Dean for Research, Karen Emmons, Office of Research Strategy and Development, signed by your Department or Division Head and co-signed by a research sponsor (if the research sponsor is different individual). (Limit 2 pages)
- Up-to-date Curriculum Vitae – (NIH format Limit 4 pages) including:
  - Publications
  - Listing of current, past and pending sources of funding
- One page budget sheet
- Summary of the nominee’s proposed research (Limit 2 pages and a third page may be used for references)

## Smith Family Awards Program for Excellence in Biomedical Research

A PROGRAM OF THE RICHARD AND SUSAN SMITH FAMILY FOUNDATION



### Overview

In 1991, the Smith Family Foundation created a grants program to support promising junior faculty who were beginning to establish their own independent laboratories and research programs. Now in its 22nd year, this Program has funded 130 scientists for a total of \$23 million.

Applications may focus on all fields of basic biomedical

### Online Application Deadline

Thursday, September 12, 2013  
12:00 Noon, U.S. Eastern Time

### Funding Period

Dec. 1, 2013 - Nov. 30, 2016

### Award Amount

Five \$300,000 awards at \$100,000 per year, inclusive of 5% institutional overhead

### Application Materials

[www.tmfgrants.org/Smith](http://www.tmfgrants.org/Smith)

### Eligibility

Full-time faculty whose first independent appointment began between 7/1/11 and 12/1/13.

Two applications from any School or College within a MA academic institution

Two applications from any hospital or free standing nonprofit biomedical research facility in MA

science. Investigators in the physical sciences (physics, chemistry and engineering) with biomedical research projects are also encouraged to apply.

**Questions**  
[GLockwood@hria.org](mailto:GLockwood@hria.org)  
or 617-279-2240, x702

Two applications each from Brown University and Yale University



**The Medical Foundation**  
A division of Health Resources in Action

*The Smith Family Awards Program for Excellence in Biomedical Research is managed by The Medical Foundation division.*

### **Now accepting applications for the 2014 Vilcek Prizes for Creative Promise in Biomedical Science**

The Vilcek Foundation is seeking applications for the 2014 Vilcek Prizes for Creative Promise in Biomedical Science. Three foreign-born biomedical scientists will be selected to receive the prizes, each including a cash award of \$35,000.

Established in 2009, the Vilcek Prizes for Creative Promise raise public awareness of the key role foreign-born researchers play in sustaining the leadership position of the United States in the sciences; the prizes also serve to support younger scientists who have distinguished themselves early in their careers.

Researchers in all fields of biomedical science are encouraged to apply. Applicants must have been born abroad, be naturalized citizens or permanent residents of the United States, hold a doctoral degree, intend to pursue a career in the United States, and be no more than 38 years old as of January 1, 2014. In addition, they must also hold a full-time independent position in an academic institution or other organization.

A panel of distinguished members of the scientific community will select the recipients of the prizes. The jury will consider the candidates' innovation, independence, creativity, clarity of vision, and impact on the field of biomedical research.

A written application, professional resume, list of publications, and letters of recommendation are required. **The deadline for submissions is August 14, 2013.** Eligibility requirements and a link to the online application can be found at [Vilcek.org](http://Vilcek.org).

The winners will be notified in November 2013 and honored at the Foundation's annual awards ceremony, in New York City, in the spring of 2014.

To be eligible for the Vilcek Prize for Creative Promise in Biomedical Science, applicants must meet all of the criteria listed below:

1. Applicant must have been born outside the United States.
2. Applicant must not be more than 38 years old as of January 1, 2014.
3. Applicant must be a naturalized citizen or permanent resident (green card holder) of the United States.
4. Applicant must have earned a doctoral degree (MD, PhD, or equivalent).



5. Applicant must intend to pursue a professional career in the United States.
6. Applicant must hold a full-time position in an academic institution or other organization. Eligible positions include the following: Assistant or Associate Professor, Research Scientist, or equivalent. *The applicant must be directly responsible for the design and execution of the work submitted for consideration. Graduate students and postdoctoral fellows working under the supervision of a mentor are not eligible.*
7. Applicant must not be a past winner or finalist of the Vilcek Prize for Creative Promise.

### **The Ellison Medical Foundation - 2013 New Scholar and Senior Scholar Awards in Neuroscience: Neuroscience of Aggressive Behavior**

The goal of this program is to support innovative, basic neuroscience research that often falls outside the scope of traditional funding sources: such research may include projects involving the application of new concepts or new technologies whose feasibility is not yet proven; projects seeking commonalities among social and anti-social behaviors that might yield new insights into neural mechanisms of aggression and related violent disorders; or projects seeking to bring together diverse scientific disciplines in the study of aggression and social behaviors. Specific topics of interest include: molecular, cellular and genetic approaches to identify the fundamental neural circuits that regulate aggression and other social behaviors; studies of the effects of aggression and social interactions on brain and behavior; studies of aggressive and related “pro-social” behaviors in model organisms from invertebrates to lower vertebrates, rodents and non-human primates; functional imaging and cognitive science approaches to define the core mechanisms and neural architecture of aggression in humans; studies to examine the development of aggression and the control of impulsive tendencies in children; and studies to identify the interacting genetic and environmental factors that increase the risk of aggression and anti-social pathologies – or conversely promote resilience to protect from the harmful effects of violence – in humans.

The 2013 New or Senior Scholar Letter of Intent must be submitted online by **11:59 p.m. Eastern Standard Time JUNE 21, 2013.**

**Those invited to submit a full application will be notified of their selection and provided with application instructions in August, 2013. Applications will be due in late September. Awardees will be notified by early November, 2013. The earliest possible start date of the award is dependent on completion of the award agreement with the grantee institution.**

See the [PDF](#) for further details.

### **United States-Israel Educational Foundation (USIEF), the Fulbright commission for Israel**

The United States-Israel Educational Foundation (USIEF), the Fulbright commission for Israel, offers 8 fellowships to American post-doctoral researchers in support of work to be carried out at Israeli universities during the course of the 2014/2015-2015/2016 academic years.

The US Post-Doctoral Fellowship Program is open to candidates in all academic disciplines. Please click below for further details:

[http://www.bsf.org.il/data/FormsToDownload/Fulbright\\_Israel\\_Post\\_Doctoral2013.doc](http://www.bsf.org.il/data/FormsToDownload/Fulbright_Israel_Post_Doctoral2013.doc)

## American Heart Association – Summer 2013 Funding Opportunities

The American Heart Association (National Office and Affiliate Offices) offers two funding cycles per year – winter and summer. The following are open research funding calls for Summer 2013.

*Several programs have a broad target audience. You should always refer to the program description for details.*

- **Mentored Clinical & Population Research Award (formerly Clinical Research Program)**  
Encourages early career investigators who have appropriate and supportive mentoring relationships to engage in high quality introductory and pilot clinical studies that will guide future strategies for reducing cardiovascular disease and stroke while fostering new research in clinical and translational science, and encouraging community- and population-based activities.  
*Offered by: [Founders](#), [Greater Southeast](#), [National and Western States Affiliates](#)*  
*Career Stage: directed step/first independent step - masters degree. Healthcare professionals with a masters degree or certain doctoral degrees.*
- **Scientist Development Grant.** Supports highly promising beginning scientists in their progress toward independence by encouraging and adequately funding research projects that can bridge the gap between completion of research training and readiness for successful competition as an independent investigator.  
*Offered by: [Founders Affiliate and National](#)*  
*Career Stage: First independent step – instructor, assistant professor or other first academic appointment or equivalent*
- **Grant-In-Aid.** Encourages and adequately funds the most innovative and meritorious research projects from independent investigators.  
*Offered by: [Founders](#), [SouthWest and Western States Affiliates](#)*  
*Career Stage: First independent step, intermediate level or recognized investigator – instructor, assistant professor or other first academic appointment or equivalent, associate professor or equivalent, professor or equivalent. Applicants are expected to be independent investigators.*
- **Established Investigator Award.** Supports mid-career investigators with unusual promise and an established record of accomplishments; candidates have a demonstrated commitment to cardiovascular or cerebrovascular science as indicated by prior publication history and scientific accomplishments. A candidate's career is expected to be in a rapid growth phase.  
*Offered by: [National](#)*
- **Innovative Research Grants.** Supports highly innovative, high-risk, high-reward research that could ultimately lead to critical discoveries or major advancements that will accelerate the field of cardiovascular and stroke research.  
*Offered by: [National](#)*
- **Predoctoral Fellowship.** Helps students initiate careers in cardiovascular and stroke research by providing research assistance and training.  
*Offered by: [Founders](#), [Greater Southeast](#), [Midwest](#), [SouthWest and Western States Affiliates](#)*  
*Career Stage: gaining credentials – doctoral student*
- **Postdoctoral Fellowship.** Helps trainees initiate careers in cardiovascular and stroke research while obtaining significant research results under the supervision of a sponsor or mentor; supports individuals before they are ready for some stage of independent research.  
*Offered by: [Founders](#), [Great Rivers](#), [Greater Southeast](#), [Midwest](#), [SouthWest and Western States Affiliates](#)*  
*Career Stage: directed step - postdoctoral fellow*

- American Stroke Association-Bugher Foundation Centers of Excellence in Stroke Collaborative Research for Regeneration, Resilience and Secondary Prevention. The Henrietta B. and Frederick H. Bugher Foundation has committed \$9.24 million dollars to the American Stroke Association (ASA, a division of the American Heart Association) to support a new network of three Centers of Excellence in Stroke Collaborative Research for a period of four years.

View more information about this exciting new funding opportunity and download the full [Request for Applications](#).

- AHA/Gerontological Society of America National Hartford Centers of Gerontological Nursing Excellence Postdoctoral Fellowship Award. Special funding is made available from the Gerontological Society of America-National Hartford CGNE to support an investigator proposing innovative basic, clinical or translational research projects relevant to gerontological nursing, aging, cardiovascular disease and /or stroke. In addition to an RN degree, applicants must hold a PhD, DN.Sc. or equivalent degree at the time of award activation. DNP applicants are not eligible. The chosen awardee will be expected to attend the GSA Leadership Conference both years of the fellowship.

Interested parties should [submit a postdoctoral fellowship application](#) to their local affiliate.

- AHA/Myocarditis Foundation Postdoctoral Fellowship Award. Supports an investigator proposing innovative basic, clinical or translational research projects relevant to the etiology, pathophysiology, diagnosis, treatment epidemiology and/or prevention of myocarditis.

Interested parties should [submit a postdoctoral fellowship application](#) to their local affiliate.

- AHA/ASA/American Brain Foundation Lawrence M. Brass, M.D. Stroke Research Postdoctoral Fellowship Award. Special funding is available from the American Brain Foundation to support a training award for an individual interested in embarking on a career in stroke research related to vascular neurology, stroke and neurocritical care. Individuals should not have more than 5 years of postdoctoral research training.

Interested parties should [submit a postdoctoral fellowship application](#) to their local affiliate.

- AHA/CCF Pediatric Cardiomyopathy Joint Research Award

The Children’s Cardiomyopathy Foundation (CCF) has partnered with the American Heart Association (AHA) to establish a research award for investigators conducting research specific to pediatric cardiomyopathy. CCF will provide \$35,000 per year for two years to fund one project related to pediatric cardiomyopathy research. The AHA will provide the balance of the funds needed to fully fund the selected award.

Interested parties should submit a [Beginning Grant-in-Aid](#) or [Grant-in-Aid](#) to their local affiliate.

### **Keystone Symposia Early Career Investigator Travel Awards (ECITA)**

Keystone Symposia has now some additional funds for Early Career Investigator Travel Awards (ECITA). These awards are for Assistant Professors from designated URM backgrounds in the U.S., who are “bench” researchers. The purpose is to support their research success by providing funds for them to attend one of the Keystone Symposia research meetings (Up to \$1800).

The application may be found on-line at [www.keystonesymposia.org/diversity](http://www.keystonesymposia.org/diversity)  
<<http://www.keystonesymposia.org/diversity>> See ECITA.

- There will be (9) awards for the 2013/2014 Keystone Symposia meeting season.
- The applicants must choose a scheduled meeting from March 1, 2013 through February 28, 2014 and have all receipts submitted for reimbursement to Keystone Symposia within 2 weeks post the end of the meeting.
- Reimbursement is only for registration, ground and air transportation, and lodging.
- Applications are reviewed by meeting organizers and the DLSP office.
- Awards are made based on the applicant's research question and the likelihood of getting the question answered at the meeting selected.
- All awards will be made on a "first come - first served" basis.
- Award Amount: 1,950 USD. This is a reimbursement award - all receipts must be submitted at one time for reimbursement.
- The application process for such awards will open March 1, 2013.
- [Click here](#) to download the application.

Applicants MUST be engaged in laboratory research and focused on a career in "bench" research.

### **Robert Wood Johnson Foundation: Active Calls for Proposals**

#### [Public Health Services and Systems Research: Mentored Research Scientist Development Awards](#)

Deadline: Wed, 21 Aug 2013  
3:00 p.m. ET

PHSSR: Mentored Research Scientist Development is intended to strengthen the pool of researchers available to conduct PHSSR and to build on successful principles and models previously demonstrated in public health and health services research.

#### [Healthy Eating Research: Building Evidence to Prevent Childhood Obesity-Round 8](#)

Deadline: Wed, 10 Jul 2013  
3:00 p.m. ET

HER supports research on environmental and policy strategies with strong potential to promote healthy eating among children to prevent childhood obesity.

#### [Robert Wood Johnson Foundation Health & Society Scholars](#)

Deadline: Fri, 20 Sep 2013  
5:00 p.m. ET

This program provides support to postdoctoral scholars to build the nation's capacity for research and leadership to address the multiple determinants of population health and contribute to policy change.

Open

### [Changes in Health Care Financing and Organization](#)

Open

HCFO supports research, policy analysis and evaluation projects that provide policy leaders timely information on health care policy, financing and organization issues.

### [Changes in Health Care Financing and Organization: Small Grants](#)

Open

Small grants: HCFO supports research, policy analysis and evaluation projects that provide policy leaders timely information on health care policy, financing and organization issues.

## Events and Announcements

### **Dana-Farber/Harvard Cancer Center - Bridge Program Technology Seminar: June 27**

We invite you to attend our upcoming Bridge Project Technology Seminar on June 27 from 5:00-7:30 p.m. in the Yawkey Conference Center (third floor), 450 Brookline Avenue. Engineers from MIT and the Koch Institute (KI) will present new technologies for cancer diagnosis and drug development.

Registration is required. Q+A and a networking reception will follow the presentations. [Please register to attend here.](#)

The goal for the seminar is to bring together engineers and technologists from across MIT with DF/HCC members to introduce tools and capabilities that could be used by new collaborative teams to improve cancer treatment. Applications will be due on Sept. 5, 2013 for the next round of Bridge team funding. Each team can request up to \$750,000 over the two year project period.

Applications will be accepted from teams addressing unmet clinical needs in the areas of lung cancer, pancreas cancer, GBM, ovarian cancer, melanoma, metastatic prostate cancer, metastatic breast cancer, and adult leukemia.

For more information on the Bridge program, visit the [Bridge Program website](#).

Seminar speakers include engineers from MIT and the KI in the following areas:

Systems Biology: Linda Griffith, Doug Lauffenburger, Ron Weiss

Early Detection/Diagnostics: Barbara Imperiali, Peter So, Joel Voldman, Krystyn van Vliet